

Winter 2021

OFF THE WALL WC&C

An Industry Publication by the Wall Ceiling & Carpentry Industries of New York

Proposed Midtown West Redevelopment Would **Create **196,000** Jobs**

— PAGE 11

Redeveloping Midtown Bus Terminal Planned

— PAGE 9

**NIH To Support Radical Approaches
To Nationwide COVID-19 Testing And Surveillance** — PAGE 18

SOUND | GUARD

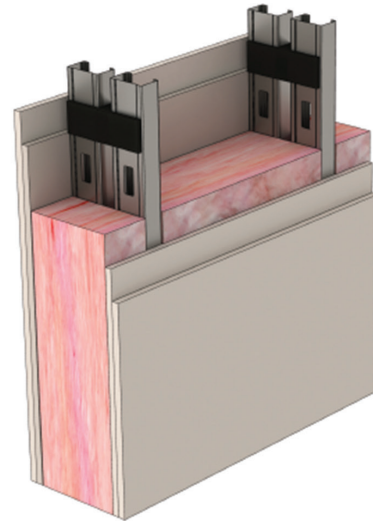
THE SILENT STEEL FRAMING SYSTEM

Time Saving Healthcare Solutions

SoundGuard stud is a factory assembled acoustically decoupled steel stud that has excellent STC ratings. A great way to control sound in healthcare environments.

- ✦ Eliminates Layers of Drywall
- ✦ Installs Just Like a Typical Stud
- ✦ No Resilient Sound Channel Required

STC60



- ✦ 2 Layers 5/8" Type X
- ✦ No RC Channel
- ✦ Fiberglass Insulation

MARINO WARE®

www.marinoware.com | 800.627.4667

AWCI ASSOCIATION OF THE
WALL AND CEILING INDUSTRY
2020 EXCELLENCE IN CONSTRUCTION INNOVATION AWARD





WC&C OFF THE WALL

Off The Wall is published through the Promotional Fund by the Association of Wall-Ceiling & Carpentry Industries of New York for the benefit of the membership. It is distributed to members, associate members, union affiliates, and legislators. Editorial contributions, including pictures and story ideas, are welcome and should be forwarded to the WC&C office, 30 Jericho Executive Plaza, Suite 700C, Jericho, NY 11753-1022

Board of Directors

Executive Director
John DeLollis

President
Michael Weber
Island Acoustics LLC.

Vice President
Lee Zaretsky
Ronsco, Inc.

Treasurer
Philip A. Bonadonna
Pabco Construction Corp.

Secretary
James Fenimore
Office Solution Installation,
LLC

Board Members

Jeffrey Anikstein
Cord Contracting
Christine Donaldson Boccia
J.D. Traditional Industries

Edward Heberer
American Wood Installers
Robert Perricone
Component Assembly Systems

Steve Richardson
National Interiors, Inc.
W. Scott Rives
Woodworks Construction Co.

Counsel
Mark A. Rosen

Design & Editorial Services,
Donald Gumbrecht & Co

© 2021 All rights reserved. While this newsletter is designed to provide accurate and authoritative information on the subjects covered, the Association is not engaged in rendering legal, accounting, or other professional or technical advice. Accordingly, the Association cannot warrant the accuracy of the information contained in this newsletter and disclaims any and all liability which may result from publication of or reliance on the information provided herein. If legal advice or other expert assistance or advice is required, the services of a competent, professional person should be sought.

Off The Wall Winter 2021



Features

- 4 Moving Forward**
— From the Executive Director, John DeLollis
- 6 New Normal**
— From the President, Michael Weber

Articles

- 9 Port Authority Leaders Lay Out Plans To Redevelop Midtown Bus Terminal**
The Port Authority has unveiled a new plan for the proposed Midtown Bus Terminal project which will completely reimagine the world's busiest bus terminal and its connection to the Lincoln Tunnel.
- 11 Proposed Midtown West Redevelopment Would Create 196,000 Jobs**
New York State has long led some of New York City's most successful and transformational macro-development projects
- 14 Construction Begins on \$126 Million Affordable and Supportive Housing Development in the Bronx**
The 19-story building will offer 148 apartments specifically for individuals and families who have previously been homeless, including those in need of supportive services
- 18 NIH To Support Radical Approaches To Nationwide COVID-19 Testing And Surveillance**
The National Institutes of Health has awarded over \$107 million to support new, non-traditional approaches and reimagined uses...

Departments

- 8 Rosen – It's the Law!**
- 20 Product News**
- 30 OSHA/Safety**



*From the
Executive Director
John DeLollis*

Moving Forward

Since the start of the epidemic more than a year ago, we've experienced unprecedented difficulties both at home and on the job. Fortunately, after the wobbly start with emergency health facilities being erected nearly everywhere; even a U.S. Navy hospital ship deployed to the Hudson river, things began to settle down and we have adjusted to what turned out to be a long haul. We're still in that long haul, still living and working according to safety protocols. Some of those measures will stay with us, like virtual conferencing and at home working schedules, which may save our companies money over time. Some may not.

Now, with new vaccines being distributed, and a second round of PPP loans for businesses, a breath of fresh air may be on the way. Yet Covid-19 and its variants are still spreading and are more virulent, more dangerous. We cannot let our safety guards down if we are going to win this battle, which we will win.

Looking forward, there is much new construction upcoming in our city. New jobs to bid on, new work to keep our staffs and jobsites active and of course, safe.

As part of Governor Cuomo's announced \$306 Billion infrastructure program for New York State, a \$51 Billion plan is proposed to redevelop Manhattan's Midtown West Neighborhood, including the Replacement of the Port Authority Bus Terminal. This is projected to create countless jobs for our industry here in New York City.

The LaGuardia Airport redevelopment is still proceeding and even though the JFK work has been temporarily held up, that is expected to begin again soon.

Projects are continuing, more are coming, and these should give us cause to generate thoughts about how our companies operate. New ideas in estimating, how to use virtual information effectively, and more. It behooves us to stay on top of things and reap the advantages of how these ideas can generate profit. There is a lot happening in New York city's construction needs. We must be on top of it.

Meanwhile there is a pandemic to beat. Stay safe and keep your workers safe too. And keep connected.

— John

HOLLOW METAL DELAYS

\$\$\$\$

OWNERS, ARCHITECTS, GCs & CONTRACTORS
MANAGE cost impacts due to hollow metal delays!

THE SENSIBLE SOLUTION...

SMARTHEAD®

**Our innovative header/framing system allows a
continuous workflow for carpentry and mechanical trades.**

**Keep your projects on track!
Find out what the industry is saying and more.
Call and/or visit our website.**

631-429-0111

www.smartheadsolution.com



From the President Michael Weber

New Normal

WHILE THE CONSTRUCTION INDUSTRY HAS ALWAYS CONSIDERED SAFETY TO BE PARAMOUNT, wider public health practices have been introduced and incorporated on job sites, enabling most to return to full operation. The construction industry has responded to the required workplace health and safety changes. The future of our industry is dependent on keeping workers safe and healthy to enable work to move forward. We are experiencing a very real increase in the number of people testing positive for COVID-19 in New York. Take careful note of the following items and ensure you read and fully understand the latest CDC Guidelines.

Workers who are not feeling well should NOT show up at any jobsite. Workers who feel sick stay home and follow CDC guidelines. <https://www.cdc.gov/coronavirus/2019-ncov/index.html>. Please find a few examples below.

Temperature checks and health questionnaires must be completed before entrance into most buildings.

Face covering /masks are mandatory for everyone.

Social distancing should be practiced in site offices /shanties and during trade breaks.

Regularly use the hand wash/sanitizing stations, especially before eating.

Freight elevator capacity restrictions must be

practiced and adhered to.

Travel Advisory guidelines are to be carried out to the fullest extent.

Staying on top of the latest health guidelines and quickly adapting to the constant changes is very important. The BTEA is also good source for information that can be helpful and useful during the COVID-19 Pandemic. They have created an online information Resource Center to provide you with up-to-date information that can help you navigate and better manage your business.

Visit <https://www.bteany.com/covid19/> for more information.

Please also note the updated New York State Emergency Paid Sick Leave law.

Small businesses with 10 or fewer employees as of January 1, 2020, and that had a net annual income less than \$1 million last year must provide your employees with:

Job protection for the duration of the order of quarantine or isolation

Your employees can access benefits through your Paid Family Leave and disability benefits policy, for the duration of the order of quarantine or isolation.

Medium businesses with 11-99 employees as of

January 1, 2020, and smaller employers (1-10 employees) that had a net annual income greater than \$1 million last year must provide your employees with:

Job protection for the duration of the order of quarantine or isolation

At least 5 days of paid sick leave

Your employees can then access benefits through your Paid Family Leave and disability benefits policy.

Large businesses with 100 or more employees as of January 1, 2020, must provide your employees with:

Job protection for the duration of the order of quarantine or isolation

At least 14 days of paid sick leave

In other news, I would like to congratulate John DeLollis, Executive Director of WC&C, on his new role

as Trustee to the North Atlantic States Carpenters Health Fund and Pension Fund. Thank you John for stepping up and representing WC&C.

On a final note, AWCI is currently under contract to hold AWCI's Convention & INTEX Expo in April in New Orleans. However, due to travel and safety concerns they are exploring other options, including possibly moving the event to the fall. If the Convention is moved to the fall, the Industry Leaders Conference scheduled for late September in Hollywood, CA would be cancelled. Additional information will be shared as it becomes available. Please visit <https://www.awci.org/> for the latest information.

Enjoy the rest of the winter and let's look forward to a healthy spring. Stay safe, wear a mask, save a life.

—Michael Weber



Schultheis & Panettieri LLP
— Accountants and Consultants —

Because Service Matters And Quality Counts

*Serving the for
over 90 years!*



LABOR ORGANIZATIONS AND
EMPLOYEE BENEFIT FUNDS

PAYROLL AUDITS



TAX AND FINANCIAL
SERVICES

INFORMATION
TECHNOLOGY

Hauppauge, NY • Floral Park, NY • Iselin, NJ www.snpcpa.com • (631) 273-4778



It's The Law

By Mark A. Rosen

Mark A. Rosen is legal counsel to the Association of Wall-Ceiling & Carpentry Industries of New York, Inc. He is a partner in the firm of McElroy, Deutsch, Mulvaney & Carpenter, LLP. Mark practices in the areas of construction and contract law, public contract law, arbitration, surety, and general commercial litigation. He can be reached at mrosen@mdmc-law.com.

NEW YORK STATE WORKERS COMPENSATION BOARD ISSUES GUIDANCE REGARDING COVID CLAIMS

New York's Workers Compensation Board ("WCB") issued guidance regarding the compensability of COVID claims under the State's workers compensation laws. The guidance indicates the factors that will be considered in determining whether in a particular instance COVID was a work related injury or illness.

Because it may be difficult to pinpoint when an individual became exposed to COVID-19, the WCB has said that it will consider any significantly elevated risk in the employee's workplace and the nature and extent of the work (e.g., in an environment where exposure to COVID-19 was prevalent). Relevant to this analysis are details about where the employee works, how often they worked, their expected job duties, and, most importantly, any requirements to interact with the general public. To demonstrate entitlement, employees will need to provide a medical report stating that their work caused their illness, as well as proof that the individual was infected with COVID-19 (through test results or a treating physician's examination).

An employee that proves that they contracted COVID-19 while working will generally be eligible for workers' compensation benefits. Compensable claims

entitle an employee to payment of an injured worker's medical treatment for the work-related illness, wage replacement benefits if the illness prevents the employee from working, benefits to an employee's surviving dependents in the event of death, and reimbursement of funeral expenses.

PENSION BENEFIT GUARANTY CORPORATION EXPECTS INSOLVENCY OF MULTI EMPLOYER PROGRAM BY 2026

The Pension Benefit Guaranty Corporation ("PBGC"), the federal pension insurer, released its ten (10) year projections that state that its multiemployer pension fund program is likely to become insolvent in 2026. The projection indicates that underfunded multiemployer pension funds will overwhelm PBGC's resources.

A bicameral congressional super committee failed to reach any consensus about addressing the underfunding crisis at the end of 2020. One of the major sticking points was who is to finance the pension relief – taxpayers or the financially distressed pension funds.

It now remains to be seen what priority a Democratic controlled Congress places on this issue. •



Port Authority Leaders Lay Out Plans To Redevelop Midtown Bus Terminal

The Port Authority of New York and New Jersey has unveiled a new plan for the proposed Midtown Bus Terminal project which will completely reimagine the world's busiest bus terminal and its connection to the Lincoln Tunnel. The new plan laid out in the Port Authority's final scoping document released today provides for a nearly 40 percent increase in transit rider capacity while responding to the needs of the

local community. The new terminal will be designed to serve 100 percent electric bus fleets and will feature cutting-edge technology to manage and speed bus movements in the terminal – using both autonomous vehicle technology and AI-aided traffic management. The release of the Port Authority's final scoping document describing the new plan based on an extensive public consultation sets the stage for the Federal

Transit Administration (FTA) to begin the federal environmental review process consistent with the National Environmental Policy Act (NEPA) and FTA regulations.

“This important step is a turning point in the transformation of the Port Authority Bus Terminal and Manhattan Midtown West into a world-class transportation hub worthy of New York,” said New

Will Completely Reimagine The World's Busiest Bus Terminal

York Governor Andrew M. Cuomo. “By completely redeveloping the terminal, adding space for commercial development, improving the commuting experience and removing bus traffic and pollution from the surrounding community, we will show New Yorkers and the world that New York is back, and the future is once again bright.”

The new plan for the new Midtown Bus Terminal includes:

The complete replacement of the existing terminal building on 8th Avenue for commuter bus services with a state of the art, best in class facility;

A bus storage and staging building between 9th and 10th Avenues that removes buses from congested city streets;

The storage and staging building also will include additional capacity to handle intercity buses that currently load and unload on city streets, reducing congestion and foot traffic from local streets;

New bus ramp infrastructure between 10th and 11th Avenues enabling direct bus access from the Lincoln Tunnel to both the new staging and storage building and to the new terminal;

Approximately three and a half additional acres of new green space in the local community

between 9th and 10th Avenues created by decking over sections of the Dyer Avenue entrance to the Lincoln Tunnel. Those areas will serve as temporary staging locations during early phases of construction and will be transformed for public green space at the completion of the construction project;

Up to four high-rise towers: one on 8th Avenue between 41st Street and 42nd Street; one on 9th Avenue between 40th Street and 41st Street; one on 11th Avenue between 39th Street and 40th Street; and one on 10th Avenue between 39th Street and 40th Street.

The construction plan for the new bus terminal will be developed with the construction industry and with the local community. Tentative plans call for a phased construction approach including the staging and bus storage facility to occur first, so that it can serve as a temporary terminal while the existing terminal is being demolished and rebuilt. The decking over of sections of Dyer Avenue would occur early in the phased construction also providing temporary bus staging locations while the main bus terminal is completely rebuilt. Once completed, the decked over areas of Dyer Avenue will become important public green space that reknits the local community.

Reliable and efficient bus service between New York and New Jersey is critical to the interconnected economies of both states, as many New Jersey residents work in New York City. Before the COVID-19 pandemic, the terminal served an estimated 260,000 passenger trips (8,000 bus movements) on weekdays, or 23 percent of trans-Hudson trips entering or exiting Manhattan's central business district. Based on pre-pandemic ridership trends, demand through 2040 is expected to increase by 30 percent with estimates of up to 337,000 weekday passenger trips.

The final scoping report includes the details of the Port Authority's plan that will now be reviewed by the FTA. That report and all future project-related public documents and presentations will be publicly available on a dedicated project website: <https://www.panynj.gov/bus-terminals/en/port-authority/planning-level-scoping-process-pabt/resources.html> •

Proposed Midtown West Redevelopment Would Create 196,000 Jobs

\$51 billion proposal would add a new train hall south of Penn Station, replaces the Port Authority Bus Terminal, extends the High Line, and adds up to 1,400 units of new affordable housing.



Rendering depicting the planned Empire Station Complex in Manhattan. (Courtesy Office of Governor Andrew Cuomo)

New York State has long led some of New York City's most successful and transformational macro-development projects, from Battery Park City to Roosevelt Island, to the transformation of Times Square. This year, the Governor has already

announced the opening of the \$1.6 billion Moynihan Train Hall, New York's most ambitious transportation and infrastructure upgrade in decades, and plans to extend the High Line to Moynihan Train Hall. In 2021, New York State will build on that progress to complete

“History teaches us that when the private economy is lagging the public sector can spur activity. That when unemployment is high, the public sector can create jobs. That only the public sector can build the common economic platform for growth. Across the state, we’re now building bigger and better, and laying the foundation for our future. Not even COVID stopped us. We used the period of reduced traffic to accelerate projects throughout the state. Altogether we are expanding our infrastructure plan to invest \$306 billion in the future of New York. That’s not just the largest infrastructure plan in New York history. It’s the largest, most ambitious plan put forward by any state in the nation.”

—Gov. Cuomo

the buildout and connectivity of Midtown West with a bold transit-oriented development plan. The \$51 billion plan will create 196,000 jobs, new outdoor spaces, affordable housing, improved public transit

ing Manhattan neighborhood. The multi-faceted plan includes:

Replacing the Port Authority Bus Terminal: The

Port Authority of New York and New Jersey will replace the outdated terminal with a new state-of-the-art facility to better serve the over a quarter million daily passengers. The project will not only reduce congestion on city streets and improve air quality but will transform mass transit to and from the West Side of Developing the Empire Station Complex: With the completion of the Moynihan Train Hall, which opened to the public on January



Penn Station will be transformed into the Empire Station Complex as part of a \$16 billion upgrade for the flailing transit hub. (Courtesy Office of Governor Andrew Cuomo)

and pedestrian connections, and bring commercial and affordable housing opportunities to the burgeon-

1, 2021, the State will turn its attention to the existing Penn Station, just across the street. The State

next page



Rendering of a brand new Port Authority Bus Terminal. (Courtesy Office of Governor Andrew Cuomo)

will start on a comprehensive \$16 billion project to reconstruct the existing station and add track capacity. By acquiring property south of Penn Station, we can expand the complex to 40 percent more train capacity and at least eight additional underground tracks to cut down on delays and improve operations for the more than 600,000 passengers it serves daily.

The signature transportation project will create nearly 60,000 direct jobs, and New York State stands ready to work with New Jersey Transit, Amtrak, and the federal government to share in this historic investment for the future of the region. The transformation of Penn Station also anticipates the Gateway Project, including two tunnels to bring more trains across the Hudson from the west and the renovation of the two existing tunnels, for a total of four train tunnels from New Jersey and beyond.

Affordable Housing and Community Restoration: With the new transportation complex as a cornerstone, the Midtown West development will also include new housing and commercial development opportunities in the area. In total, the area spanning from Broadway to the Hudson will include up to 14 buildings that will yield more than 20 million square feet of retail, commercial, and residential development and provide up to 1,400 much-needed units of affordable housing in a transit, job, and amenity-rich community.

New Waterfront Park at Pier 76: Located west of the Javits Center and 36th Street, the State will transform Pier 76 from an NYPD car tow pound to a 5.6-acre expansion of Hudson River Park. In the short term, it can become a magnificent public space

that allows visitor access to the waterfront while the Hudson River Park Trust develops plans for the Pier's long-term future.

Javits Center Expansion: The 1.2 million-square-foot, \$1.5 billion expansion of the Jacob K. Javits Center will be completed in 2021, increasing capacity of the



Hudson River Park would be expanded onto Pier 76 and linked to the High Line per plan (Courtesy Office of Governor Andrew Cuomo)

nation's busiest convention center by 50 percent. The expansion will include a rooftop pavilion and outdoor terrace for 1,500 people; a one-acre rooftop farm; a 54,000-square foot special event space with Hudson River views; 90,000 square feet of new exhibition space that will create 500,000 square feet of contiguous exhibition space; and a truck marshaling facility to reduce congestion and pollution. •

Construction Begins on \$126 Million Affordable and Supportive Housing Development in the Bronx

1159 River Avenue to Deliver 245 Affordable Homes



Governor Andrew M. Cuomo recently announced the start of construction on 1159 River Avenue, a \$126 million development that will bring 245 homes to the South Bronx. The 19-story building will offer 148 apartments specifically for individuals and families who have previously been homeless, including those in need of supportive services.

“We continue to make unprecedented investments in affordable housing that will help tackle the dual inequality and homelessness crises,” Governor Cuomo said. “New developments like this project

demonstrate our ongoing efforts to provide Bronx residents with high-quality, energy-efficient homes with supportive services for the most vulnerable among us.”

The Governor’s commitment to providing all New Yorkers with access to safe, affordable housing is reflected in the State’s unprecedented \$20 billion, five-year Housing Plan. The plan makes housing accessible and combats homelessness by building or preserving more than 100,000 affordable homes and 6,000 with supportive services.

Designed to provide good quality, affordable homes, 1159 River

Avenue is part of the Governor’s overall strategy to revitalize communities and grow the economy. Since 2011, New York State Homes and Community Renewal has invested over \$1.3 billion that has created or preserved more than 15,000 affordable homes in the Bronx.

1159 River Avenue will include 245 apartments with 148 set aside for individuals and families who have experienced homelessness and those recovering from mental illness. Of these units set aside, 128 households will have access to on-site services and rental assistance funded through the Governor’s

Empire State Supportive Housing Initiative administered by the New York State Office of Mental Health. The remaining rental units are reserved for low-income individuals and families. There is one apartment for a superintendent.

Supportive services will include linkage to and coordination of services with other community resources, including primary care and mental health services, and direct support in a variety of areas including: goal setting, systems navigation, self-advocacy, educational/vocational/employment information and referrals, nutrition, harm reduction strategies, and social supports. The supportive service provider is Community Access, Inc.

The development will meet Enterprise Green Communities Standards and Energy Star's Multi-Family High Rise standards and will include such energy-efficient features as Energy Star appliances and water conserving low-flow fixtures.

The 19-story building will have art, exercise, laundry and computer rooms. The ground floor will have 20,500 square feet of commercial space.

1159 River Avenue is four blocks from Yankee Stadium in a neighborhood that is near the 6, D and B subway lines; schools; houses of worship; supermarkets; convenience stores; and Mullaly Park which has ballfields, a playground,

walking and bicycle paths and sitting areas.

HCR's financing for 1159 River Avenue includes \$25 million in permanent tax-exempt bonds, Low-Income Housing Tax Credits that will generate \$43 million in equity and \$16 million in subsidy. The ES-SHI award administered by OMH will provide \$3 million annually for services and operations. The New York City Department of Housing Preservation and Development is providing an additional \$26 million of subsidy through its Supportive Housing Loan Program. The development team consists of Community Access, Inc. and J. Equities II, LLC, an affiliate of affordable housing developer Maddad Equities. •

With union carpenters,
you don't just build, you
succeed.

North Atlantic States Carpenters Training
Center, Long Island



**The North Atlantic States Regional Council of
Carpenters. It's time to build. To learn more, visit
NASRCC.org**

270 Motor Parkway, Hauppauge, NY 11788 631-952-9800

Turner Construction Selects Wellness Workdays to Reimagine Safety and Well-being for Jobsite Workers

Initiative uses health assessments, coaching and behavior change to promote employees' physical and mental wellness

Wellness Workdays, a leading provider of award-winning corporate wellness programs, announces it has been selected by Turner Construction Company to reimagine safety and well-being initiatives for the workers and employees on a large multi-year project in Boston, Massachusetts. Headquartered in New York City, Turner is a North American-based, international construction services company with a staff of 10,000 that completes 1,500 construction projects each

year.

Wellness Workdays "Wellness Trailer 2.0" program will focus on helping Turner's employees and Trade Partner workers adopt and maintain healthy lifestyles with an emphasis on both physical and behavioral well-being. A key component of the initiative is centered on redefining the role of the wellness trailer to ensure prevention and screenings are top priorities.

Construction work can be

demanding, and long work hours can lead to high levels of stress and anxiety for those in the field. Left untreated, the stress and anxiety can result in chronic health conditions, premature illness and even death. Furthermore, substance use by employees in the industry is four to six times the national average.

"We know the conversation around safety needs to include the topic of substance use/misuse as well as mental health, resilience



MARCUM
ACCOUNTANTS • ADVISORS



**COMBINED
STRENGTH**

Castellano, Korenberg & Co., CPAs, P.C.

has joined forces with

MARCUM

The merger combines Long Island's leading construction accounting firm into one of the largest independent public accounting and advisory services firms in the nation. Castellano, Korenberg's specialization further expands Marcum's leadership as a **national construction industry service provider**.

For information please contact us:

Daniel Castellano
(631) 414-4330
daniel.castellano@marcumllp.com

and physical well-being,” said Bruce Ventura, Vice President at Turner Construction Company in Boston. “We chose Wellness Workdays to support our efforts to promote employee health and wellness, rather than only taking measures to treat illnesses and injuries.”

Wellness Workdays will assist and support Turner Construction Company in creating a systematic approach to enhancing the lives of all workers at their jobsite. This will entail a prescribed population health management approach, including a health coaching program supported by software data management and analytics, which will bring a systematic approach to coaching

and track outcomes. The onsite wellness trailers will include a trained coach/EMT who will fulfill the roles of EMT, health coach, care manager and health advocate, and act as an extension of the safety team. To create and implement a successful and engaging program, Wellness Workdays will develop an operational wellness plan that includes multi-level leadership involvement, culture alignment, relevant content and programming, communications, integration of union and partner resources, and a focus on outcomes.

“We are excited to launch Turner’s innovative and engaging program, which highlights the future of well-being for construction and

trades. This initiative will re-envision how employees access the wellness trailer and enhance the services available at each jobsite,” said Debra Wein, CEO of Wellness Workdays. “While triage remains a focus of the trailer, the promotion of health, safety, wellness and thriving, at work and at home, will also be the primary focus.”

About Wellness Workdays

Wellness Workdays is a Massachusetts company with offices in New York that designs and delivers corporate wellness programs to promote employee health, productivity and a culture of well-being.

For more information visit <http://www.wellnessworkdays.com> •

McELROY, DEUTSCH, MULVANEY & CARPENTER LLP

WWW.MDMC-LAW.COM

A NATIONAL LAW FIRM THAT KNOWS CONSTRUCTION

MARK A. ROSEN, ESQ.
mrosen@mdmc-law.com

88 PINE STREET, 24TH FLOOR
NEW YORK, NEW YORK 10005
(212) 483-9490
FAX: (212) 483-9129

NEW JERSEY

NEW YORK

COLORADO

PENNSYLVANIA

CONNECTICUT

MASSACHUSETTS

DELAWARE



The National Institutes of Health has awarded over \$107 million to support new, non-traditional approaches and reimagined uses of existing tools to address gaps in COVID-19 testing and surveillance. The program also will develop platforms that can be deployed in future outbreaks of COVID-19 and other infectious diseases. A part of the Rapid Acceleration of Diagnostics (RADx) initiative, the awards from the RADx Radical (RADx-rad) program will support 49 research projects and grant supplements at 43 institutions across the United States. It will focus on non-traditional viral screening approaches, such as

NIH To Support Radical Approaches To Nationwide COVID-19 Testing And Surveillance

biological or physiological markers, new analytical platforms with novel chemistries or engineering, rapid detection strategies, point-of-care devices, and home-based testing technologies.

“To solve a problem as complicated as COVID-19, we need ideas, tools, and technologies that challenge the way we think about pandemic control,” said NIH Director Francis S. Collins, M.D., Ph.D. “These awards from the RADx-rad program provide superb examples of outside-the-box concepts that will help us overcome this pandemic and give us a cadre of devices and tactics to confront future outbreaks.”

The grants will support new approaches to identifying and tracking the current SARS-CoV-2 virus, which causes COVID-19. Examples of these projects include:

Development of an electrochemical biosensor in two detection devices, a diagnostic breathalyzer for instant detection of SARS-CoV-2, and an airborne detector for real-time, continuous surveillance of a large space.

Development of novel, safe and effective biosensing and detection technologies to spot signatures of COVID-19 from human skin or mouth.

Development of an innovative platform that integrates biosensing with touchscreen or other digital devices to achieve automatic, early detection and tracing of SARS-CoV-2 in real-time.

Development of a novel test to independently assess smell and taste function in individuals who are at high risk for contracting COVID-19.

Development of wastewater technologies and data collection methods for detecting and estimating SARS-CoV-2 community infection levels, which can offer advanced knowledge of community spread and allow for targeted public health protection measures.

Implementation of devices with integrated

artificial intelligent systems for the detection, diagnosis, prediction, prognosis and monitoring of COVID-19 in clinical, community and everyday settings.

Characterization of the spectrum of SARS CoV-2 associated illness, including the multisystem inflammatory syndrome in children (MIS-C).

Development of biomarkers and biosignatures for an algorithm utilizing artificial intelligence to predict the long-term risk of disease severity after a child is exposed to SARS-CoV-2.

Additionally, two intramural projects were supported by this initiative: a \$1 million award to the National Institute of Environmental Health Sciences for developing barcoded screening of SARS-CoV-2; and a \$200,000 award to the National Library of Medicine (NLM) for a Nationwide Early-Warning System and Data Platform to aid policy decisions for public health management of viral diseases with COVID-19 as a use case. •

myComply Selected to Provide New York City With Safety Database and Connect 150,000+ Construction Workers to Smart Technology

[myComply](#), a provider of technology used to verify safety training, has been selected by the New York City Department of Buildings (NYC DOB) to build and administer the software behind an innovative construction safety database.

Construction is widely recognized as the most high-risk industry in New York City. Standardized safety training is one way the city plans to mitigate risk and ensuring that all construction workers are appropriately trained is the starting point for reducing workplace accidents and fatalities in the city.

In 2017, Local Law 196 was signed by Mayor Bill de Blasio, which outlined New York City's forward-thinking commitment to safer job sites. As a result of Local Law 196, the New York City Department of Buildings initiated a plan, cadence, and strategy to ensure the city was prepared to manage such a significant initiative.

In partnership with myComply, the New York City Department of Buildings has outlined a thorough plan to ensure all worker certifications and training can be verified on job sites and accessed on demand by NYC

DOB enforcement personnel. Accessibility to this information allows the City of New York to proactively verify safe-practice and discipline construction permit holders who are unwilling to abide by the motions set forward with Local Law 196.

"myComply's involvement with the contract in New York City will allow for great transparency and easy access to verifiable worker training certifications," said Mark Wolff, CEO of myComply. "This allows DOB officials, whose job it is to enforce safe-practice on construction sites, to ensure all workers on a site are adequately trained."

myComply uses mobile technology and cloud-based software to centrally manage and verify safety certifications and training requirements. This centralized management enables the Department of Buildings to obtain valued industry safety information, ensuring that permit holders on New York City job sites are prioritizing safe workplace practices. In March of 2021, all construction workers in New York City are required to obtain a Site Safety Training Card (SST Card), which ensures workers have at least 40 hours of specific safety training completed from authorized course providers.

"The easiest way to reduce risk on construction sites is to ensure that all workers on the site have adequate, up-to-date training," explained Mark Wolff, CEO of myComply. "When a worker is adequately trained it's far less likely for an incident to occur. myComply has worked with contractors across the globe ensuring that all workers on a site are adequately trained. The next step for our company is ensuring that all New York City construction workers have standardized, verifiable, and up-to-date safety training."

SOURCE myComply

New VidaShield UV24™ In-Ceiling Air Purification System from Armstrong Helps Neutralize Harmful Airborne Pathogens

System uses patented UV-C air cleaning technology to continuously reduce level of viruses, bacteria and fungi in a room's air



Armstrong Ceiling & Wall Solutions has introduced Armstrong's new VidaShield UV24™ Air Purification System, an in-ceiling system that improves indoor air quality by using patented ultraviolet light (UV-C) air cleaning technology to continuously clean and reduce the level of pathogens in a room's air.

The Armstrong VidaShield UV24 System integrates a UV-C air purification system from Medical Illumination International Inc.(MI) with Ultima® Health Zone™ or School Zone™ Fine Fissured™ ceiling panels to offer safe, unobtrusive, in-room air purification for cleaner air. For a unified ceiling visual and enhanced

Product News

ARMSTRONG VIDASHIELD

air quality throughout a space, the system coordinates with new Ultima® Health Zone™ AirAssure™ panels.

As MI studies demonstrate, VidaShield UV24™ contributes to healthier spaces by not only reducing the levels of infectious viruses, bacteria and fungi in the air but also the settling of those pathogens onto room surfaces, thereby reducing the risk of indoor air transmission of viruses.

The 2' x 4' products operate continuously to draw air into a sealed, self-contained, concealed chamber behind the ceiling panel where the air is treated with ultraviolet light air-cleaning technology. Ultra-quiet fans then recirculate the treated air back into the room. As MI studies demonstrate, the system neutralizes 97 percent of infectious pathogens in aerosols on the first pass of air.

Perfect for Retrofits

The VidaShield UV24 system is designed for use in hospitals, long term care facilities, nursing homes, schools, commercial office buildings, and any other location where cleaner environmental air is desired. Each unit can treat a volume of air equivalent to an

8' x 10' x 10' room four times per hour and can be a helpful component in facility cleaning protocols.

Conveniently installed in ceilings, the system is perfect for retrofits of existing spaces. It is easy to install and requires minimal maintenance with no staff intervention needed to operate. Its design allows for safe 24/7 operation in occupied spaces and saves the space normally occupied by portable air-cleaning units.

The VidaShield UV24 system is part of the new Armstrong® 24/7 Defend™ portfolio of ceiling and wall products that contribute to healthier, safer spaces and cleaner air. The growing line includes new Armstrong® AirAssure™ ceiling panels that reduce air leaks through the ceiling plane in a space up to four times compared to regular ceiling panels; the CleanAssure™ family of disinfectable ceiling panels, suspension systems, and trim; and Infusions™ Resilient partitions.

For more information about the VidaShield UV24 air purification system, visit armstrongceilings.com/vidashield. For more information about other ceiling and wall solutions Armstrong offers for healthier spaces, visit armstrongceilings.com/healthyspaces. If help is needed, reach an Armstrong TechLine expert at armstrongceilings.com/techline.

**BE SAFE!
...STAY SAFE!**

KNAACK® EXPANDS SAFETY KAGE™ INDUSTRIAL CABINET LINE WITH TWO NEW CORE MODELS

KNAACK®, introduces two new core models of the industry-first KNAACK® Safety Kage™ industrial cabinet. Designed for industrial users with a long list of jobsite storage needs, each new Safety Kage model helps optimize the job site by maximizing fall protection and other personal protective equipment (PPE) storage. The line extension adds two new core models to the Safety Kage family: the 139-SK-02 and 139-SK-03.

The KNAACK Safety Kage 139-SK-02 is built to store the maximum amount of fall protection equipment. When it comes to something as important as fall protection, dedicated and proper storage is essential for preventing unwanted damage and ensuring the safety and longevity of the equipment.

The 139-SK-02 is designed with 32 hooks in the main compartment, providing storage for more harnesses, lanyards and gear than any other Safety Kage model. Ventilated doors ensure airflow and allow equipment to dry between shifts. A welded upper shelf and extra hooks on the doors provide quick access to helmets and other PPE.

Securing the cabinet and equipment inside is the KNAACK patented WATCHMAN® IV Lock System with its best-in-class jobsite theft-prevention.

The KNAACK Safety Kage 139-SK-03 provides unparalleled flexibility thanks to its patent pending, industry-first interchangeable doors that allow a customizable set-up. Three different industrial cabinet configurations are available to order, but



interchangeable accessory doors can be mixed and matched to provide up to 10 different arrangements.

139-SK-03: The primary model comes with ventilated doors that enhance airflow and allow contents of the storage cabinet to dry.

139-SK-03C: These safety-focused cabinet doors have compartments designed to hold essential safety equipment like an eye-washing station, fire extinguisher and first aid kit.

139-SK-03S: This tool cabinet configuration has solid doors for maximum security and protection against weather and dust.

All of the new Safety Kage jobsite storage cabinets are made from heavy-duty 16-gauge steel with arc welded seams. The steel is powder-coated for superior durability and corrosion resistance. Each Safety Kage industrial cabinet comes with recessed handles and casters, and is liftable by crane with the KNAACK 497 crane lift kit.

The new additions to the Safety Kage product line are now available nationally. For more information, visit

KNAACK
knaack.com/safetykage.

HILTI UNVEILS BIM-ENABLED CONSTRUCTION JOBSITE ROBOT

Construction Automation Solution to Help Contractors Tackle Productivity, Safety and Labor Shortage Challenges on Jobsites

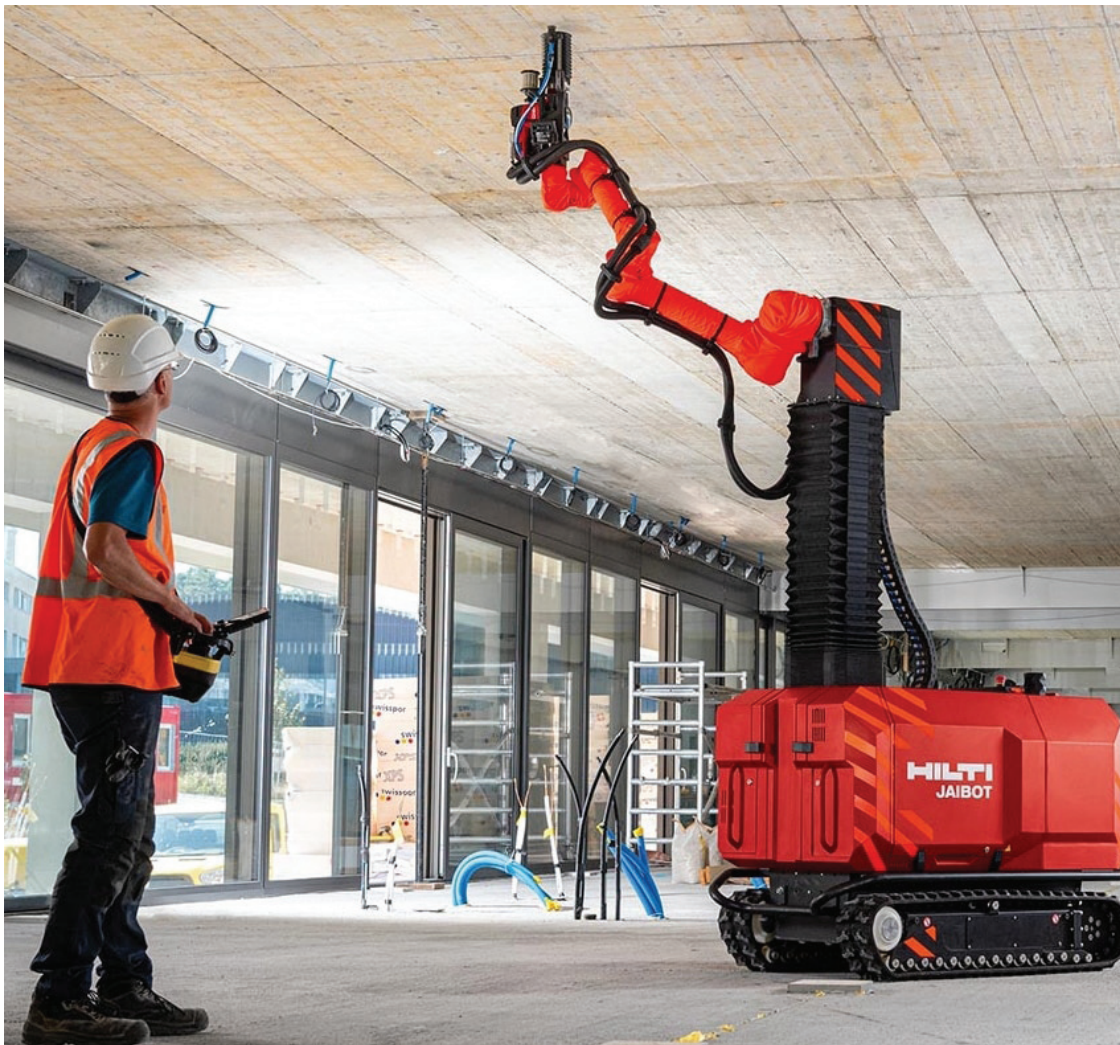
Hilti, an innovator of tools, technology, software and services to the commercial construction industry, today introduced its first robot, Jaibot, for semi-autonomous mobile ceiling-drilling. The Hilti Jaibot construction

automation solution, Hilti makes a further step toward the digitization of construction sites.

The Jaibot executes its tasks based on building information modeling (BIM) data. The robot is a completely

cordless and easy-to-use system that doesn't require expert skills. It locates itself accurately indoors, drills the holes dust-controlled and finally marks them according to the trade. This is what makes the solution ideally suited for the mechanical, electrical and plumbing trade (MEP).

"The productivity of the construction industry has been lagging behind other sectors for years. Margin pressure and shortages of skilled labor are already facts of life in our industry and make it increasingly difficult to overcome productivity shortfalls. But leveraging the opportunities offered by



robot will help Mechanical, Electrical and Plumbing installation contractors tackle productivity, safety and labor shortage challenges. With this new construction

digitization will compensate for it. We do this by intelligently linking processes, teams and data," said Jan Doongaji, Member of the Executive Board, Hilti Group. "With Jaibot, and in close collaboration with our cus-

Product News

tomers, we are further stepping toward realizing the efficiency that digital transformation can and will bring to construction sites.”

Paradigm shift in construction industry underway

Time and budget overruns are common, especially for large construction projects. Significant productivity gains are possible with digitally planned construction projects and their realization with the help of robotic solutions. BIM-enabled robotic solutions also make the construction process more transparent with improved execution speed, constant performance and fewer errors. Daily progress can be reported from the field to the project office via cloud computing. Potential conflicts between the trades involved on a jobsite also can be detected at an early stage and then limited, resulting in more projects delivered on-time and within budget.

Helping workers with most physically demanding tasks

Safety played an important role in the development of the Jaibot. It is designed to assist tradespeople in physically demanding, repetitive installation tasks such as drilling numerous holes overhead for many mechanical, electrical or plumbing installations. It is navigated by the worker via remote control and uses reference data from a robotic total station, the Hilti PLT 300. Holes within reach are drilled automatically.

“We looked at which routine work on the construction site is among the most stressful, and that is primarily overhead work,” said Julia Zanona, Product Manager for Robotics at Hilti. “From the beginning, it was important to us to develop a robotic solution that supports our customers where it is most needed. The Hilti Jaibot takes over the most strenuous and exhausting tasks.”

HILTI

hilti.com

• Acoustical Ceiling, Wall & Suspension Systems • Wood & Metal Specialty Ceilings • Lumber & Decking • Drywall •



The Contractors Source
Serving the NY/NJ Metropolitan Area Since 1939

Kamco.com



Brooklyn

80 21st Street,
Brooklyn, NY 11232
718-768-1234

Manhattan

506 West 21st Street
New York, NY 10011
212-736-7350

Long Island

301 Robbins Lane
Syosset, NY 11791
516-935-8660

Kamco Supply of NJ, LLC

845 East 25th Street
Paterson, NJ 07513
973-247-1234

Doors, Frames & Access Doors • Tools & Equipment • Flooring • Insulation

Plywood • Jobsite Protection/ GC Needs • Structural Floor Panels

• Fire Protection Products • Boom & Spider Truck Service (up to 10 Stories) • Light Gauge Steel Framing & C-Joists •

MAKITA LAUNCHES TWO 18V LXT BRUSHLESS 4-SPEED MID-TORQUE IMPACT WRENCHES

The XWT17 and XWT18 are the most powerful impact wrenches in their class



MAKITA U.S.A., INC., MANUFACTURER OF HIGH-QUALITY PROFESSIONAL TOOLS AND ACCESSORIES, is excited to introduce two new mid-torque 18V LXT® Brushless 4-speed 1/2" Sq. Drive Impact Wrenches. Both impact wrenches provide improved

fastening control ideal for automotive and construction trades. With a compact size and less weight, these impact wrenches are the right size to handle most applications, including overhead tasks.

The new impact wrenches include the following:

XWT17-18V LXT®

Brushless 4-Speed Mid-Torque 1/2" Sq. Drive Impact Wrench w/ Friction Ring Anvil. Available in kit (XWT17T) and tool only (XWT17Z) versions.

XWT18-18V LXT®

Brushless 4-Speed Mid-Torque 1/2" Sq. Drive Impact Wrench w/ Detent Anvil. Available in kit

(XWT18T) and tool only (XWT18Z) versions.

The impact wrenches are powered by a Makita-built

Product News

brushless motor for longer run time. The brushless motor delivers 520 ft.lbs. of Fastening Torque and 740 ft.lbs. of Nut-Busting Torque.

Three forward and three reverse Auto-Stop modes provide increased efficiency to reduce the possibility of damaged materials and lost fasteners. The forward Auto-Stop modes allows the user to apply more torque while keeping within an expected range. The reverse Auto-Stop modes are engineered for more control when removing a fastener, which helps reduce lost fasteners when working overhead or in tight spaces.

The 4-speed power selection provides precise fastening control matching the speed to the application. The switch has settings ranging from 500 – 2,200 RPM (1,000 – 2,700 IPM). The additional Full Speed Mode reduces the trigger pull to reach full speed.

Extreme Protection Technology (XPT™)

Makita's Extreme Protection Technology (XPT™) is a protective seal inside the tool. It is designed to improve a tool's operation in harsh conditions by channeling water and dust from key internal components.

18V LXT® System

Makita® LXT Cordless System, the world's largest cordless tool system powered by 18V lithium-ion slide-style batteries, takes a user from power tools to outdoor power equipment to get the job done. Makita 18V LXT Batteries have the fastest charge times in their categories, so they spend more time working and less time sitting on the charger.

Star Protection Computer Controls™

For improved tool performance and extended battery life, Makita created Star Protection Computer Controls™. Star Protection is communication technology that allows the Star Protection-equipped tool and battery to exchange data in real time and monitor conditions during use to protect against overloading, over-discharging and overheating. For increased versatility, the tool can also be powered by Makita 18V LXT Lithium-Ion Batteries with the star symbol on the battery indicating Star Protection inside.

MAKITA TOOLS

makitatools.com

DEWALT® Debuts 20V MAX* Cordless Drywall Sander

DEWALT announces the 20V MAX* Drywall Sander (DCE800), another addition to the expansive 20V MAX* System, which features more than 200 products supporting cordless jobsite solutions. Optimized for mobility, the sander is ideal for production work and repairs in hard-to-reach and unpowered areas.



The 20V MAX* Cordless Drywall Sander is the first in the DEWALT line and is optimized for use in demanding applications. A telescoping shaft and fully articulating head allow for easy sanding of walls and ceilings in confined spaces and tough-to-reach areas. The sander is also designed with a head-mounted brushless motor, which maintains constant speed under load while eliminating flex shaft and brush failures.

As part of the DEWALT commitment to safety, the 20V MAX* Cordless Drywall Sander includes several features to enhance dust-extraction. It is fully integrated with Wireless Tool Control, allowing the unit to wirelessly activate and deactivate a compatible dust extractor (DCV585, sold separately) without a separate fob. Once paired, the trigger automatically activates and deactivates the dust extractor, preserving extractor battery life and eliminating the user's need to manually control the dust management process. Additionally, the sander contains a built-in AirLock™

connection port, which allows for quick and secure connection to DEWALT dust extractors without the need for a separate adaptor. Other features include a variable speed dial and dual action trigger for application versatility.

The 20V MAX* Cordless Drywall Sander will launch with a program of accessory backing pads and sanding discs of varying grits. The tool kit includes a soft backing pad (DWE7801, DWE7801-5) for fine finishing work and an additional hard backing pad (DWE7802, sold separately) is available for high dust-generating material removal applications. Both soft and hard backing pads accept common 9-In. hook-and-loop sanding discs. A program of compatible 9-In. DEWALT paper and mesh sanding discs are also launching with the program (sold separately), and are available in various pack counts ranging from 80 to 240 grit that are perforated for dust extraction.

Available where DEWALT products are sold, the 20V MAX* Drywall Sander is kitted with two (2) 5.0Ah Batteries for \$619 MSRP or bare tool for \$439 MSRP.

*.*Maximum initial battery voltage (measured without a workload) is 20 volts. Nominal voltage is 18.*

DEWALT

www.DEWALT.com

Milwaukee® Expands Safety Glasses Offering with Anti-Scratch, Fog-Free, and New Lens Colors

Milwaukee Tool enhances safety and productivity on the jobsite with an expansion of their safety glasses lineup including anti-scratch, fog-free, and new magnification and lens color options. All new safety glasses are designed for extended wear and are equipped with comfortable temple arms for comfort. Aside from the magnifying safety glasses, all new glasses are available with yellow lenses that make environments appear brighter and are ideal for working in lowlight,

gray lenses that are optimized for indoor and outdoor locations, as well as clear and tinted lenses.

Anti-Scratch Safety Glasses Designed for all-day comfort, the Milwaukee® Anti-Scratch Safety Glasses have a durable hard coat to protect the lenses from the common demands of the jobsite and a flexible nose bridge for extended comfort.



Anti-Scratch Magnifying Safety Glasses

For easy reading and clarity on the jobsite, the Anti-Scratch Magnifying Safety Glasses have an anti-scratch hard coat for lens protection and clear magnified lenses which allow users to read easily without sacrificing protection.

The lenses are available in magnifications between +1.00 and +3.00 diopter. For comfort, the anti-scratch glasses also feature a flexible nose bridge.

Fog-Free Safety Glasses For all-day comfort, the Fog-Free Safety Glasses have a flexible nose bridge, fog-free lenses to maintain clear vision in the toughest conditions, and resist scratching for added durability.

Performance Safety Glasses Milwaukee is also expanding their Performance Safety Glasses with new gray and yellow lenses. Launched in 2019, the Milwaukee Performance Safety Glasses are equipped with fog-free lenses that resist scratching to ensure that users' vision stays unobstructed on the jobsite. As a step up in productivity and durability, the Performance Safety Glasses feature military-grade impact protection above the Z87.1+ ANSI rating*, withstanding a projectile impacting the lenses at 725ft per second.

Milwaukee Tool's new safety glasses are designed to provide users with all-day comfort, ultimate durability

and protection—without sacrificing jobsite productivity. Milwaukee Tool is focused on creating innovative solutions that won't slow users down, helping them STAY SAFE. STAY PRODUCTIVE™. ***ANSI Z87.1—Eye and Face Protection Standard: Sets the comprehensive standards to be used for protective eye and face devices in OSHA U.S. regulations. Z87.1 is the standard for safety glasses.**

MILWAUKEE

milwaukeetool.com

Powerful New SENCO Cordless Framing Nailer Provides Reliable Fastening of Even Toughest Engineered Lumber

SENCO announced a new cordless framing nailer that bridges the performance gap between traditional pneumatic and cordless framers. Built on SENCO's proprietary FUSION™ technology platform, the F-35XP provides reliability, power and speed without the need for a compressor and hose assembly.

Powered by an 18-V Li-Ion battery and a self-contained compressed air cylinder, the F-35XP consistently drives paper-tape collated framing nails into



the hardest jobsite substrates, including engineered lumber. It excels in framing, panelized construction, truss building, subflooring, sheathing, decking, siding, fencing, pallet building and crate assembly applications.

“The F-35XP is engineered to be to be the most robust and reliable cordless nailer available, and it is powerful enough to easily drive into today's densest construction materials like LVL and OSB,” said Eric Bellman, senior product manager for SENCO. “It is also designed to be intuitive and familiar — using the F-35XP simply feels like using a traditional pneumatic nail gun.”

Unlike combustion-type cordless nailers, FUSION™ technology doesn't require costly fuel cells or produce irritating fumes. The F-35XP instead relies on a brushless motor to release a burst of compressed air that drives fasteners. There is also no “ramp-up” time, common in flywheel-type nailers, allowing contractors and builders to work as quickly with the F-35XP as they would with a traditional pneumatic.

“SENCO pioneered cordless pneumatic technology when we launched our first FUSION™-powered tools over a decade ago,” Bellman said. “Originally developed for finish and trim nailers, our time-tested and cost-effective FUSION™ technology has been propelled into the heavy construction category with the F-35XP.”

The F-35XP features a 34-degree magazine that holds 60 fasteners and accommodates nails from 2 to 3 ½ inches long and .113 to .148 inches in diameter. Each tool comes with two 3.0 Ah Li-Ion extended-life batteries that can drive up to 600 nails per full battery charge. Also included is a 5-amp quick charger, which charges batteries to 80 percent in 30 minutes, and fully in one hour.

SENCO

www.senco.com/fusion

Product News

Marino\WARE Team Earns CSI, CCS Technical Excellence Award

The Joseph S. Zajchowski, CSI, CCS Technical Excellence Award is awarded to a member, chapter or committee making an outstanding achievement in technical activity during the most recently completed fiscal year.

This award goes to Marino\WARE Industries. Anthony Stazzone - Architectural Sales Manager, Ed Tan and Xylon Moreno of the Engineering and Technical Services Team.

MARINOWARE
marinoware.com



American Wood Installers
Architectural Millwork Installations
Edward Heberer
President
7 Arbutus Court
Commack, NY 11725
631-864-9188 P.
631-410-1928 F.
Eheberer@americanwoodinstallers.com



THE QUALITY BRANDS YOUR PROJECT DEMANDS

DELIVERY EQUIPMENT FOR ALL YOUR NEEDS

Get to know us more at ParkAveBuilding.com

2120 Atlantic Avenue, Brooklyn, NY 11233
T: 718.403.0100 | F: 718.596.5085



Biden Executive Order Calls on OSHA to Release New COVID-19 Guidance

Among the first executive orders President Biden signed directed OSHA to release guidance within two weeks to employers on workplace safety during the pandemic and to evaluate whether any emergency temporary standards are needed.

The agency has until March 15 to issue emergency standards, which could include mask-wearing in the workplace.

The order also requires a review of OSHA's enforcement efforts related to COVID-19 and requires the administration to identify what changes could be made to protect workers.

In the order, Biden wrote that "ensuring the health and safety of workers is a national priority and a moral imperative."

"Healthcare workers and other essential workers, many of whom are people of color and immigrants, have put their lives on the line" during the pandemic.

The order marks a shift from the Trump administration, under which OSHA was criticized for its oversight and reporting requirements for COVID-19 cases, The Washington Post notes.

OSHA Issues Proposed Rule To Update Hazard Communication Standard

The U.S. Department of Labor's Occupational Safety and Health Administration (OSHA) today issued a proposed rule to update the agency's Hazard Communication Standard (HCS) to align with the sev-

enth revision of the Globally Harmonized System of Classification and Labelling of Chemicals (GHS).

OSHA expects the HCS update will increase worker protections, and reduce the incidence of chemical-related occupational illnesses and injuries by further improving the information on the labels and Safety Data Sheets for hazardous chemicals. Proposed modifications will also address issues since implementation of the 2012 standard, and improve alignment with other federal agencies and Canada.

Individuals may submit comments identified by Docket No. OSHA-2019-0001, electronically at <http://www.regulations.gov>, which is the Federal e-Rulemaking Portal. Read the Federal Register notice for details. The deadline for submitting comments is April 19, 2021.

OSHA has preliminarily determined that the proposed modifications would enhance the effectiveness of the standard by improving dissemination of hazard information so employees are more appropriately apprised of exposure to chemical hazards in the workplace.

Established in 1983, the Hazard Communication Standard provides a standardized approach to workplace hazard communications associated with exposure to hazardous chemicals. OSHA updated the standard in 2012 to align with the third revision of the United Nations' GHS to provide a common and coherent approach to classifying chemicals and communicating hazard information.

OSHA Remains Focused on Keeping Workers Safe

In 2020, the U.S. Department of Labor's Occupational Safety and Health Administration (OSHA) used its authority through a combination of traditional practices and unique approaches to assure safe and healthful working conditions for America's workers.

The Bureau of Labor Statistics reported that, in October alone, 21.8 percent of employed persons teleworked because of the coronavirus, a number that reached 35 percent of employed persons in May. In FY 2020 (Oct. 1, 2019, through Sept. 30, 2020), the agency conducted 21,674 inspections in response to worker complaints, injuries and fatalities, and referrals impacted by the coronavirus. OSHA received 20,541 complaints – including 9,189 coronavirus-related complaints – and investigated every complaint.

OSHA's On-Site Consultation Program identified 80,910 workplace hazards, removing 667,492 workers from potential harm. Virtual technologies were used to continue major outreach initiatives, including the National Safety Stand-Down to Prevent Falls in Construction and the Safe + Sound Campaign. The agency expanded its outreach and education efforts by issuing "COVID Tip-of-the-Day" and "Did You Know" direct messages.

OSHA received and investigated 11,865 whistleblower complaints. Nearly a quarter of the complaints (3,437) were coronavirus-related. Monetary settlements or merit awards totaled \$30.1 million, nearly doubling \$16 million from the previous year.

OSHA pivoted its health and safety training to digital formats, reaching more than 1.6 million workers and exceeding last year's record of more than 1.3 million workers trained. The training was provided through the agency's various education programs, including the OSHA Training Institute Education Centers, Outreach Training Program and Susan Harwood Training Grant Program. •

U.S. Department of Labor Announces Annual Adjustments to OSHA Civil Penalties

The U.S. Department of Labor has announced adjustments to Occupational Safety and Health Administration (OSHA) civil penalty amounts based on cost-of-living adjustments for 2021.

In 2015, Congress passed the Federal Civil Penalties Inflation Adjustment Act Improvements Act to advance the effectiveness of civil monetary penalties and to maintain their deterrent effect. Under the Act, agencies are required to publish "catch-up" rules that adjust the level of civil monetary penalties, and make subsequent annual adjustments for inflation no later than January 15 of each year.

OSHA's maximum penalties for serious and other-than-serious violations will increase from \$13,494 per violation to \$13,653 per violation. The maximum penalty for willful or repeated violations will increase from \$134,937 per violation to \$136,532 per violation.

The Department of Labor Federal Civil Penalties Inflation Adjustment Act Annual Adjustments for 2021 final rule was effective January 15, 2021, and the increased penalty levels apply to any penalties assessed after January 15, 2021.

Under the Occupational Safety and Health Act of 1970, employers are responsible for providing safe and healthful workplaces for their employees. OSHA's role is to help ensure these conditions for America's working men and women by setting and enforcing standards, and providing training, education and assistance. For more information, visit www.osha.gov. •

SAVE OVERTIME
FOR OTHER PLANS.

Getting off-site starts with using the right materials on-site. ClarkDietrich helps you do your best work as efficiently as possible. From framing to finishing, ClarkDietrich products and services save time, material and labor, so you can get the job done right and go grab some peace of mind.

LEARN MORE AT			
clarkdietrich.com			
OVERTIME		REGULAR TIME	
	AM	IN	OUT
	PM	IN	OUT
DAY 1			